

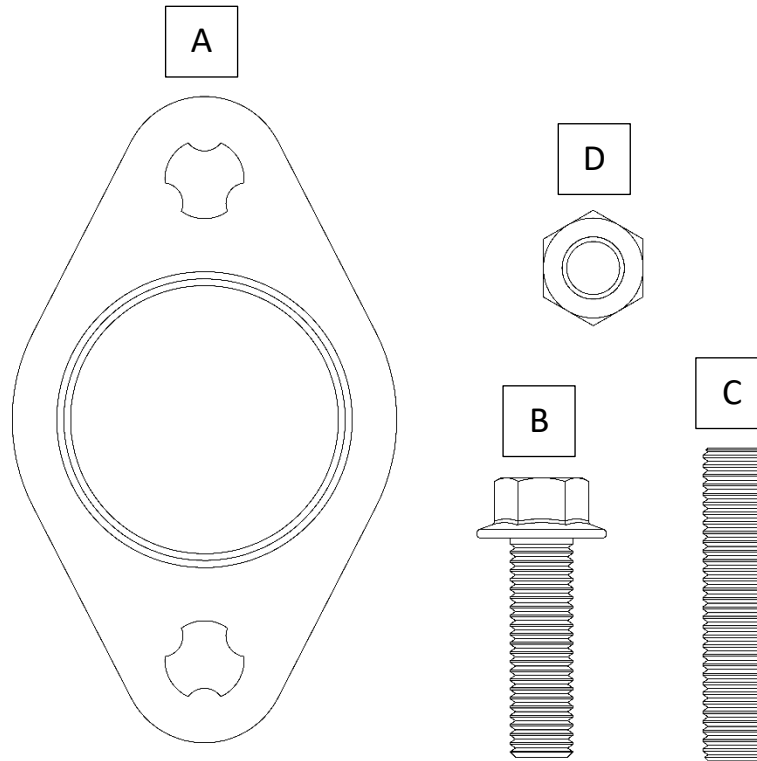
# Cummins 6.7L (2007.5-2018)

## T4i Exhaust Manifold

### Installation Instructions



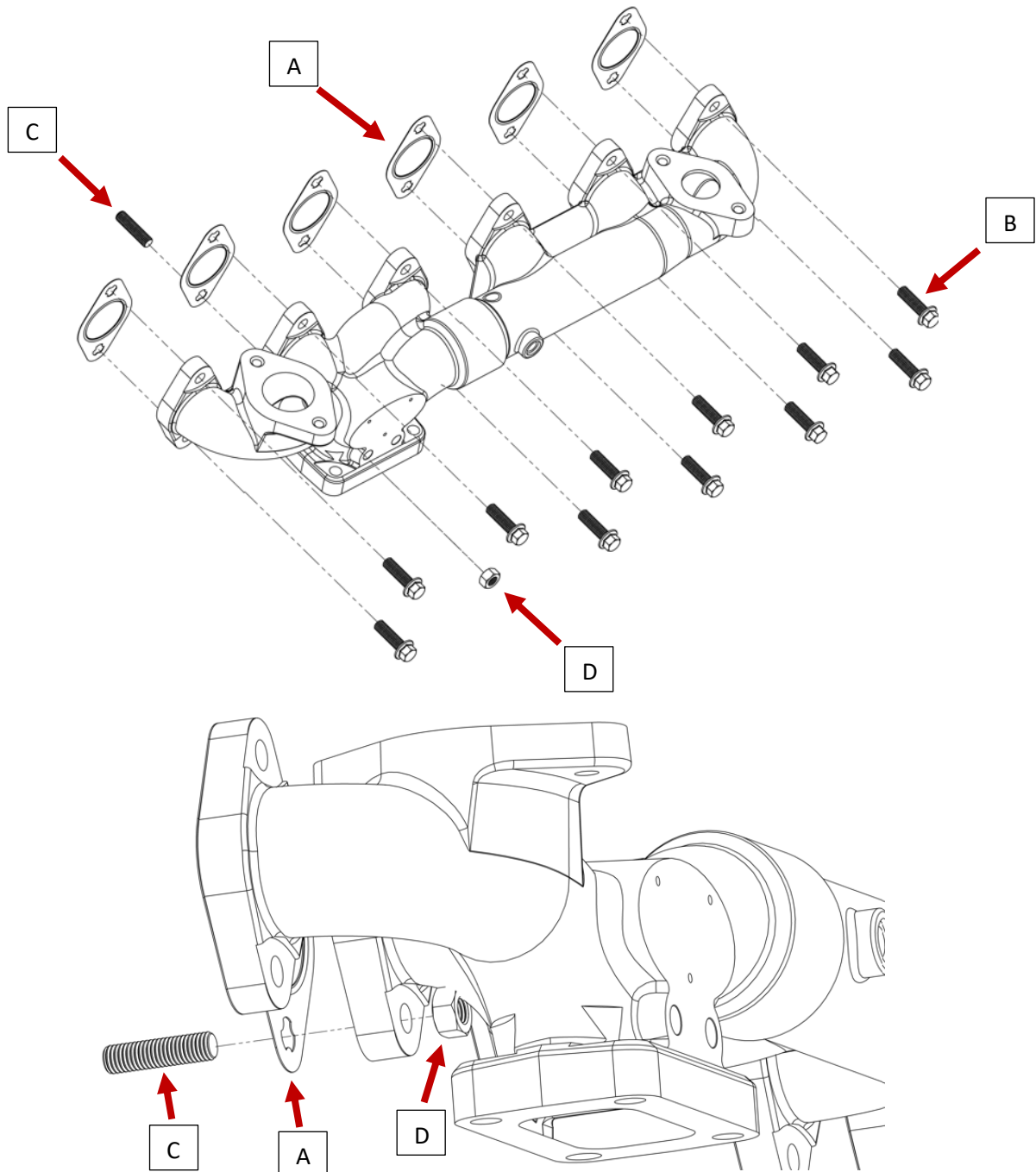
# Hardware List:



<u>Hardware Letter:</u>	<u>Hardware Specification:</u>	<u>Quantity:</u>
A	24V Multilayer Manifold Gasket	6
B	M10-1.5 x 35mm Flange Bolt	11
C	M10-1.5 x 50mm Stud	6
D	M10 Nut	6

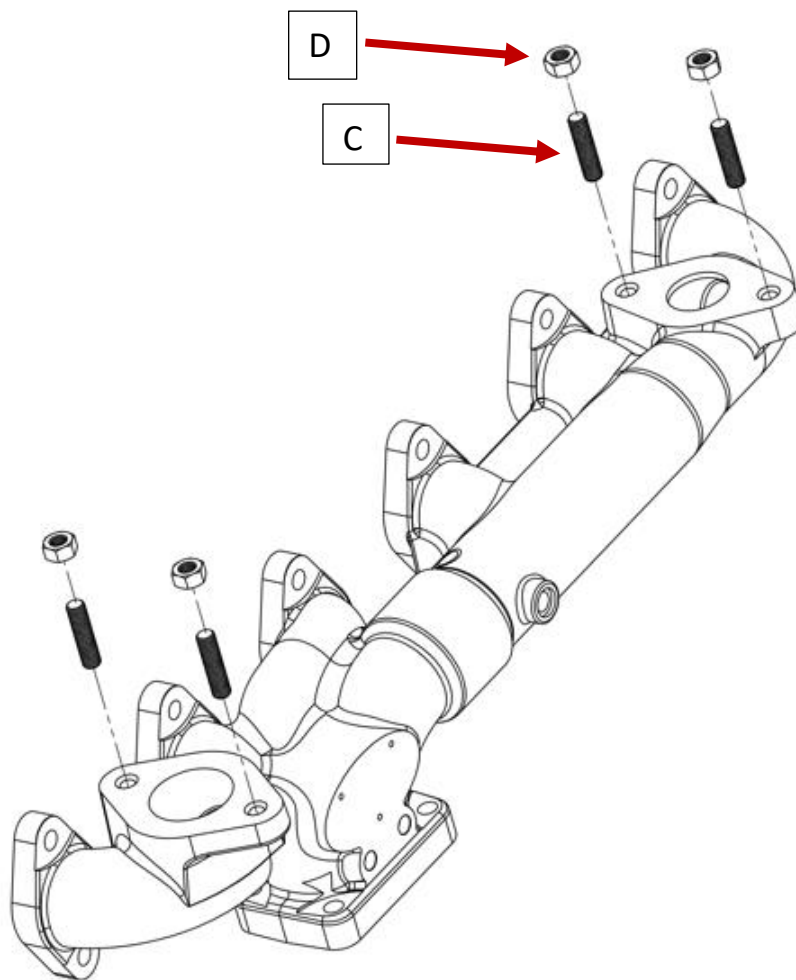
# Manifold to Engine Block Installation:

Install the manifold onto the engine block by following the diagrams below. Use a **C** stud and **D** nut on the bottom hole of cylinder 5's exhaust port. Make sure to thread the stud into the block before installing the manifold. The remaining holes will use all the **B** bolts included with your manifold. Make sure to place the **A** gaskets between the engine block and manifold. Torque each fastener to **35 ft-lbs.**



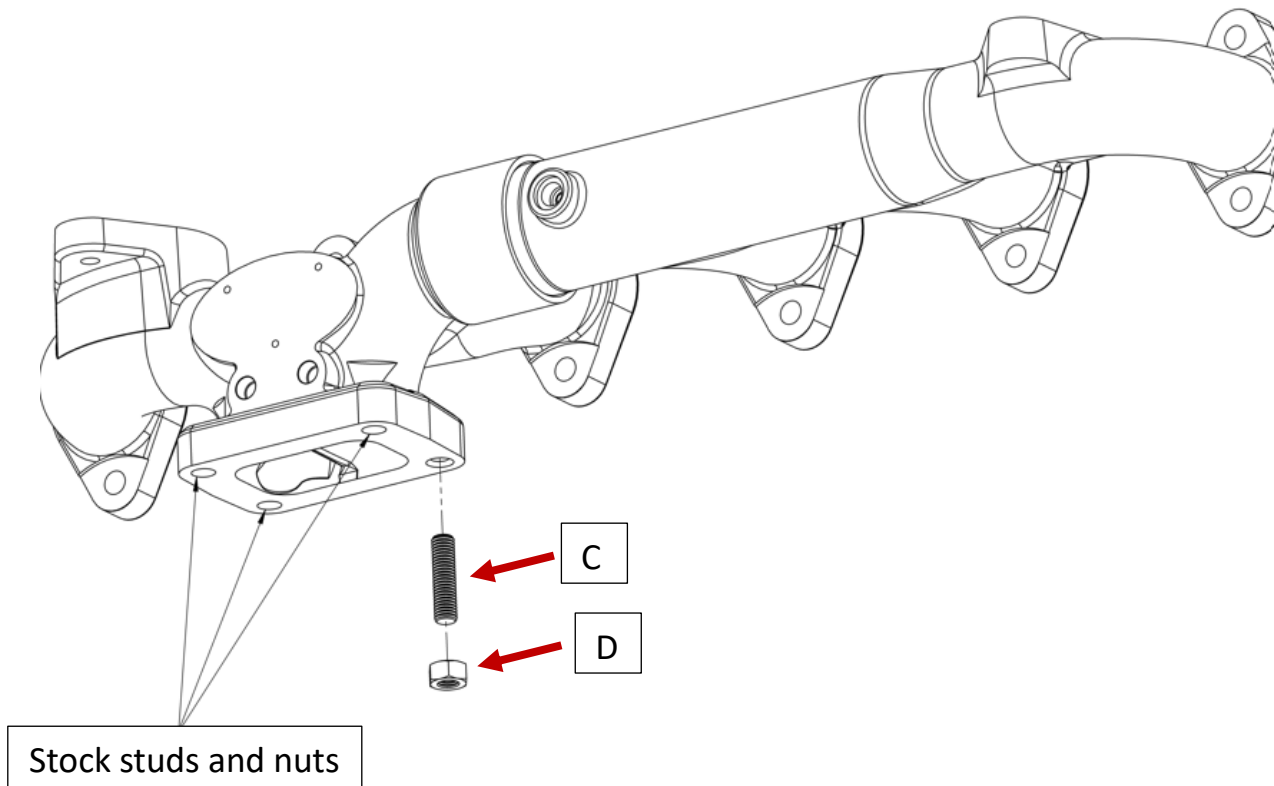
# EGR to Manifold Installation:

Use the provided **C** studs and **D** nuts to fasten the EGR system to the manifold's EGR ports. Make sure to place EGR gaskets between the manifold and EGR (**Note:** The EGR gaskets are not included with the manifold). Torque each fastener to **35 ft-lbs**. Refer to the diagram below.



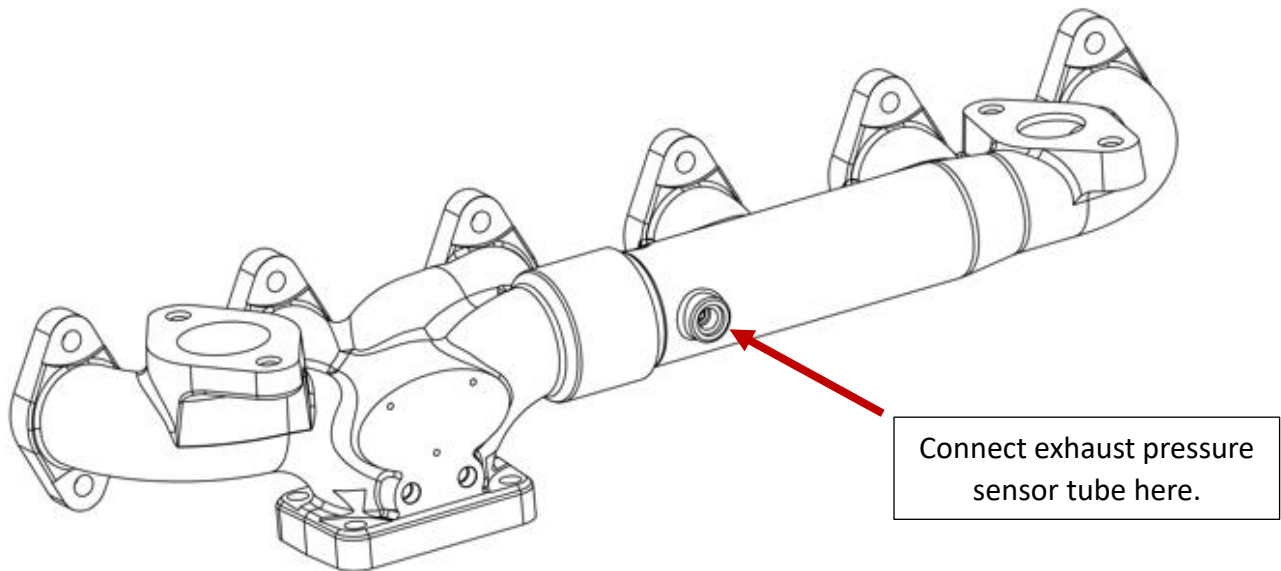
# Turbo to Manifold Installation:

Install the turbo onto the manifold by following the diagram below. Use a **C** stud and **D** nut in the threaded hole of the manifold's turbo flange. Make sure to thread the stud into the manifold before installing the turbo. Use the stock turbo's studs and nuts in the remaining bolt holes. Make sure a turbo gasket is placed between the manifold and turbo. (**Note:** The turbo gasket is not included with the manifold.) Torque each fastener to **35 ft-lbs**.



# Exhaust Pressure Tube Installation:

Connect the exhaust pressure sensor tube to the manifolds exhaust pressure sensor port. Make sure the tube is securely connected to the manifold. See the diagram below.



Connect exhaust pressure sensor tube here.

**After installation, drive the truck for approximately 100 miles then, while the truck is warm re-torque all the manifold and turbo bolts, as the bolts sometimes loosen up after being heated and cooled a few times.**