

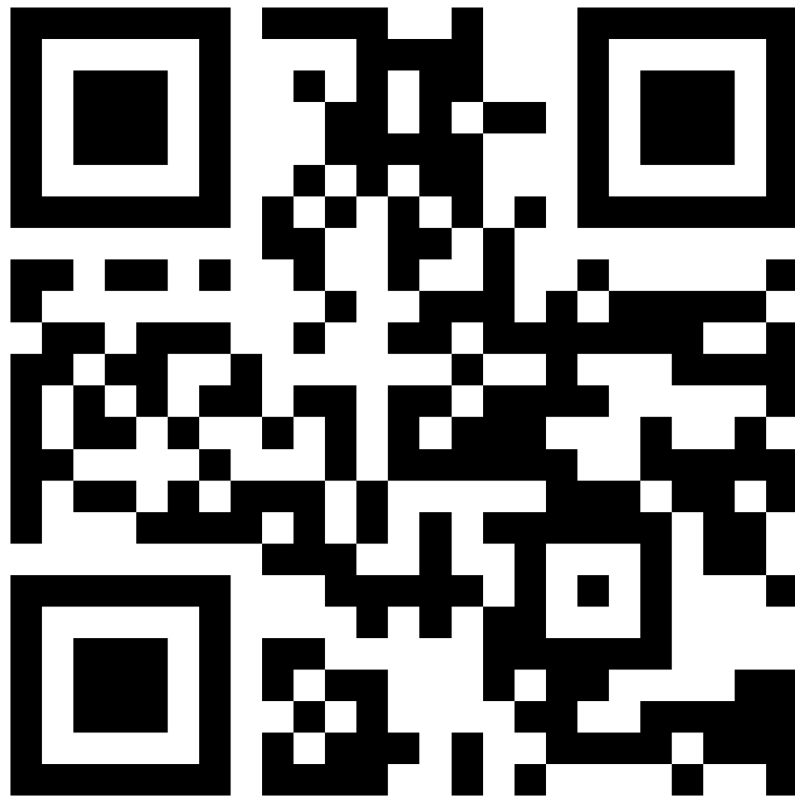
AC Relocation Kit Installation Instruction

1. Before attempting to install this kit, air conditioning refrigerant must be properly discharged. We recommend getting it done professionally at your local auto shop. (Some places do it for free.)

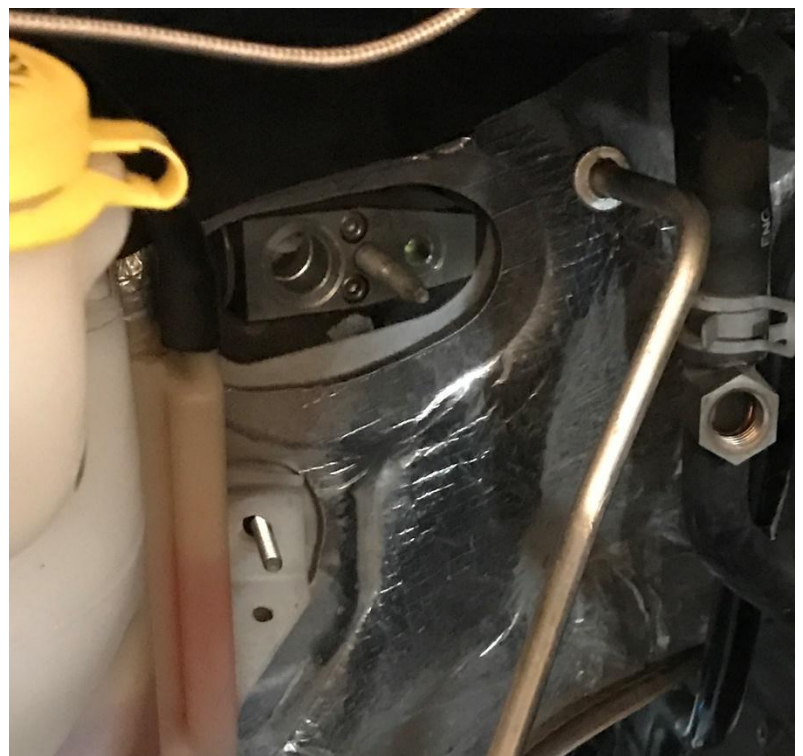
**** IMPORTANT - WARNING & NOTICE ****

FITTINGS ARE ALUMINUM, which is a soft metal, MAKE SURE TO FIRST THREAD IN FITTINGS BY HAND STRAIGHT & A SUFFICIENT AMOUNT, BEFORE USING A SOCKET AND/OR WRENCH ON THEM. ONLY TORQUE TO 100 INCH POUNDS. ANY CROSS THREADING OR STRIPPING OF THREADS IS NOT COVERED BY WARRANTY, AND INDIVIDUAL FITTINGS CANNOT BE PURCHASED SEPARATE FROM A FULL KIT!

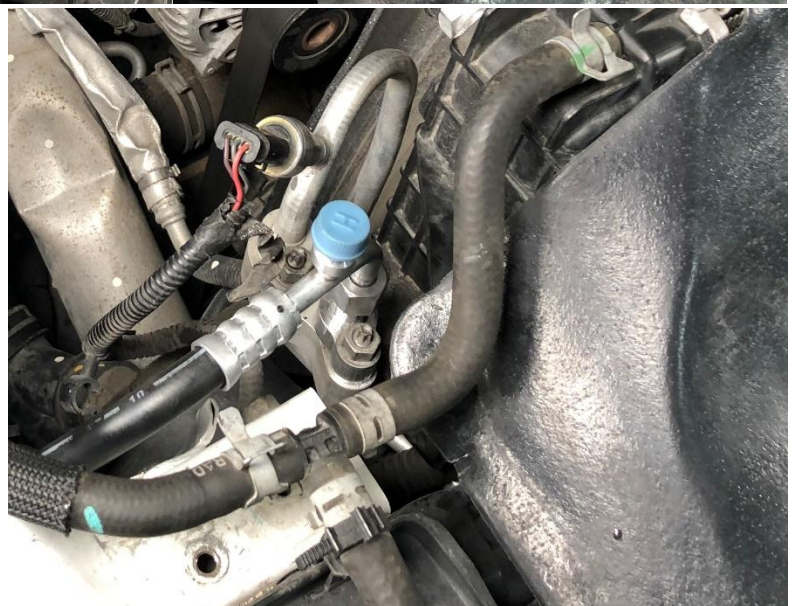
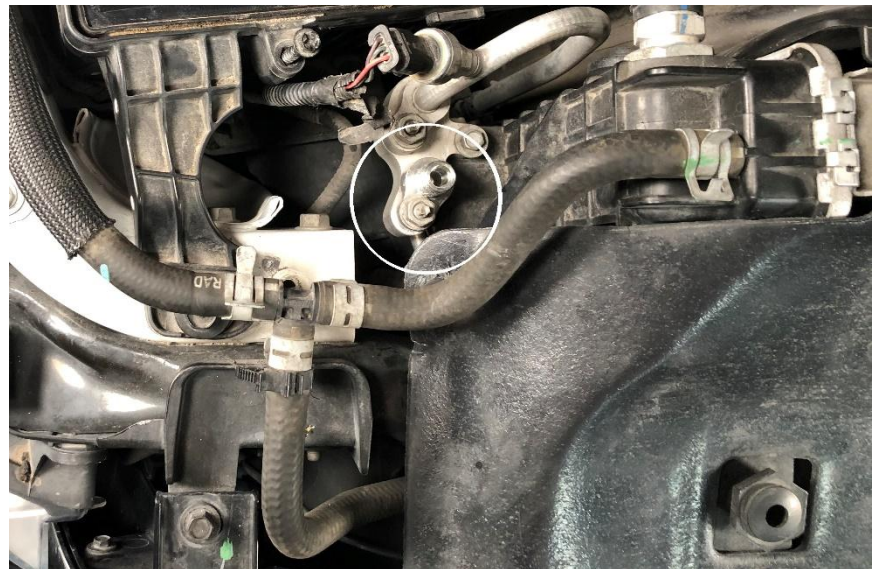
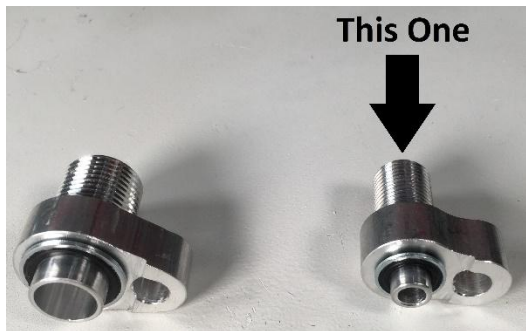
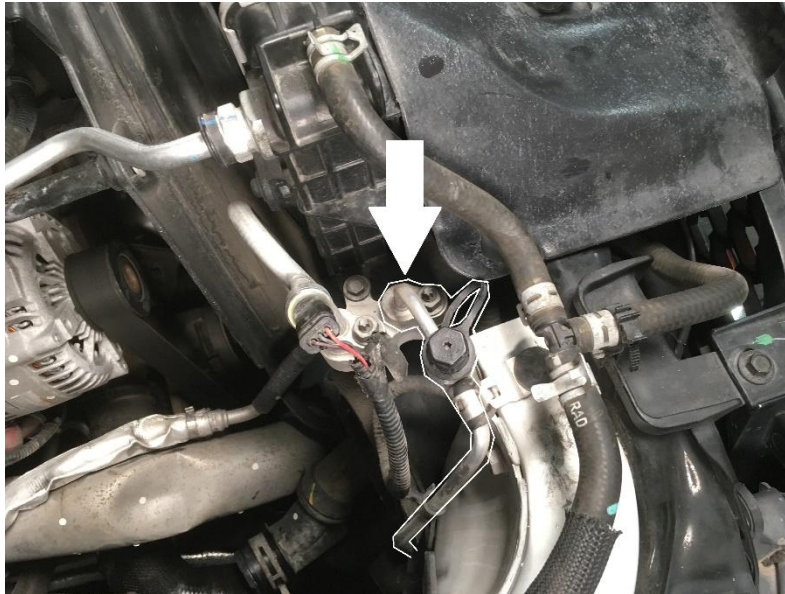
Click the QQ Code for the complete installation instructions.



2. This kit replaces both of the refrigerant lines that connect to the expansion valve on firewall.
So, next disconnect both refrigerant lines from the firewall.

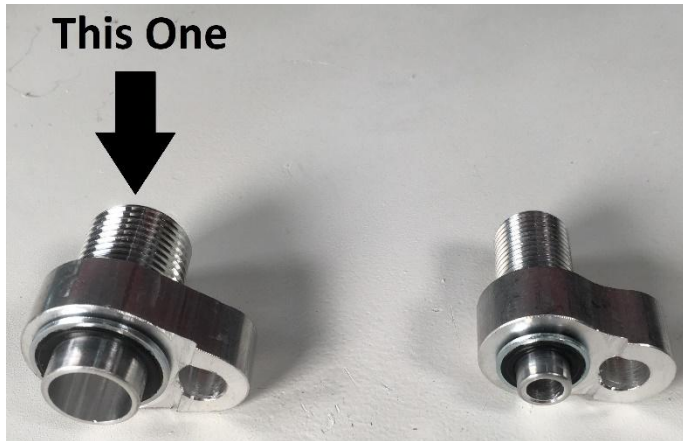


3. Follow the thinner refrigerant line and disconnect it from the front side by condenser. Remove the line. Then install the new fitting and line provided with the kit as shown below.

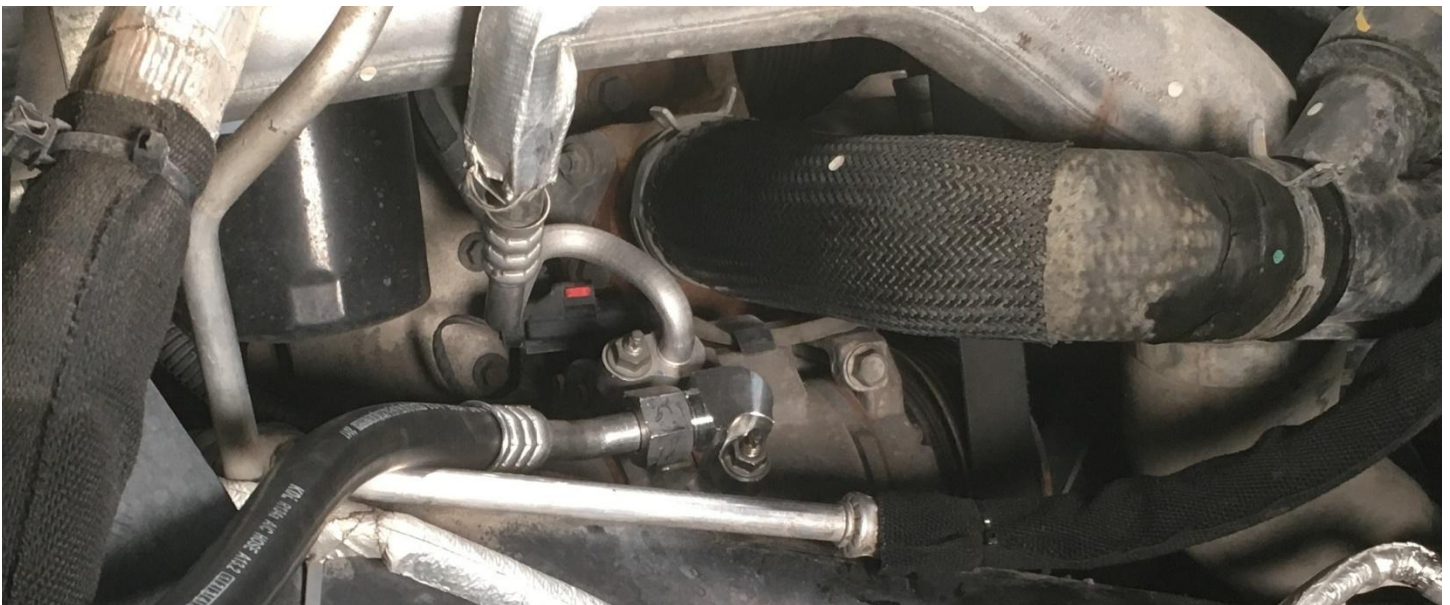
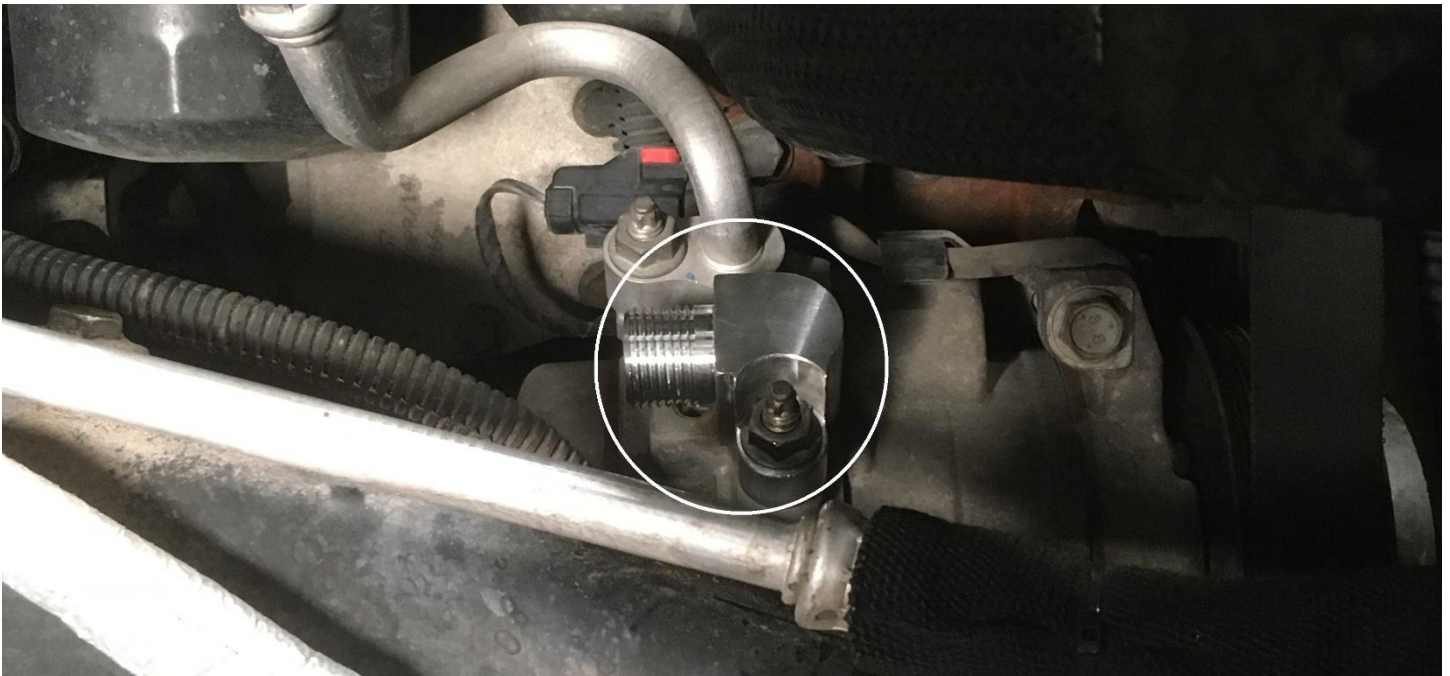


4. Disconnect and remove the refrigerant line from the compressor. Then install the new fitting with the seal washer and the line provided with the kit as shown below. Be sure to use the appropriate fitting for your year of truck.

Fitting for 2012 and Older Truck

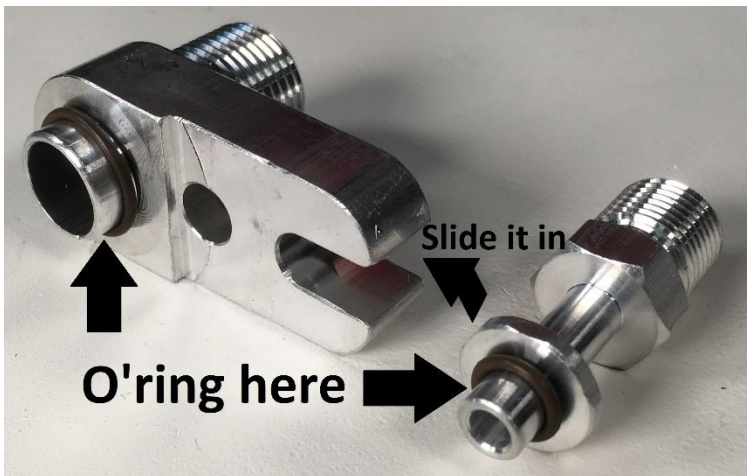


Fitting for 2013 and Newer Truck



5. Install the new fitting to the expansion valve on the firewall using the factory nut. If your factory line uses the o'ring style, use the o'rings provided in the kit for the new fitting. If your factory line uses the seal washer style, use the seal washers provided.

O'ring Style on factory line



Seal Washer Style on factory line



New Fitting Installed



6. Route the two lines installed in steps 3 & 4 to the firewall, then connect them to the fitting installed. **Make sure the o'rings are still in place on both of the lines before connecting them.**



7. Charge the air conditioning refrigerant and enjoy the cool air and a newly added space.