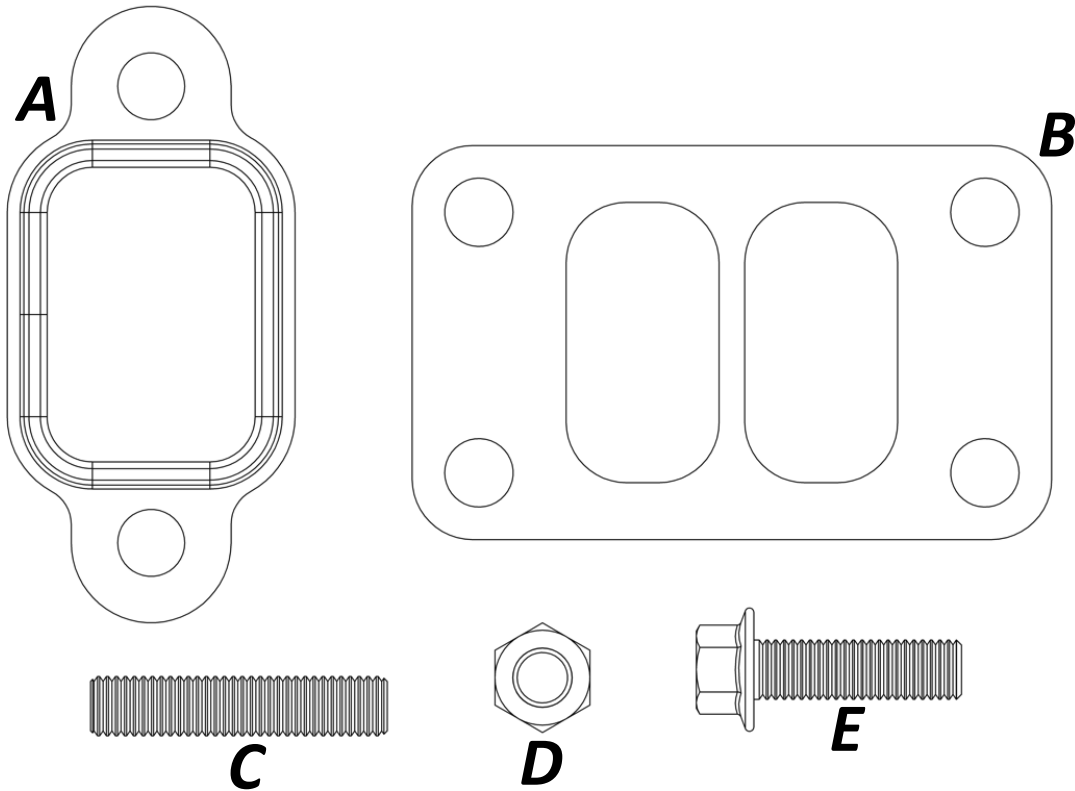


RV Manifold Installation

Instructions



RV Manifold Hardware

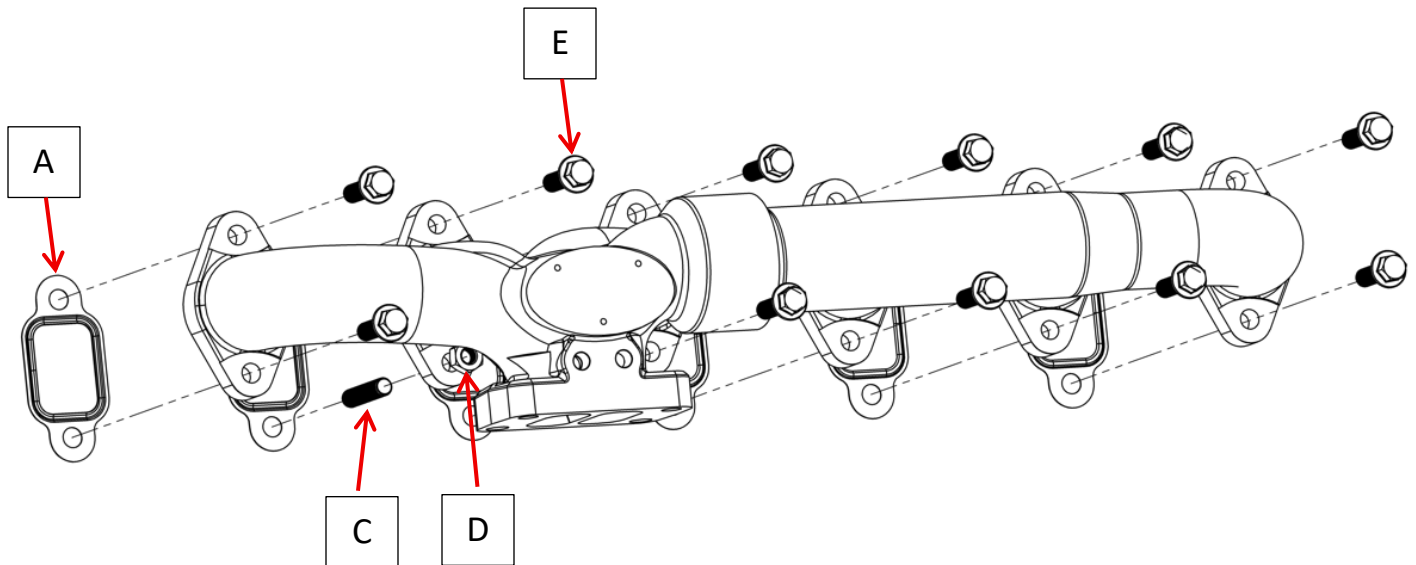


Hardware Letter:	Hardware Specification:	Quantity:
A	12V Manifold Gasket	6
B	T3 Turbo Gasket	1
C	M10 – 1.5 x 50mm Stud	5
D	M10 – 1.5 Nut	7
E	M10 – 1.5 x 35mm Flange Head Bolt	11

Manifold to Engine Block Installation:

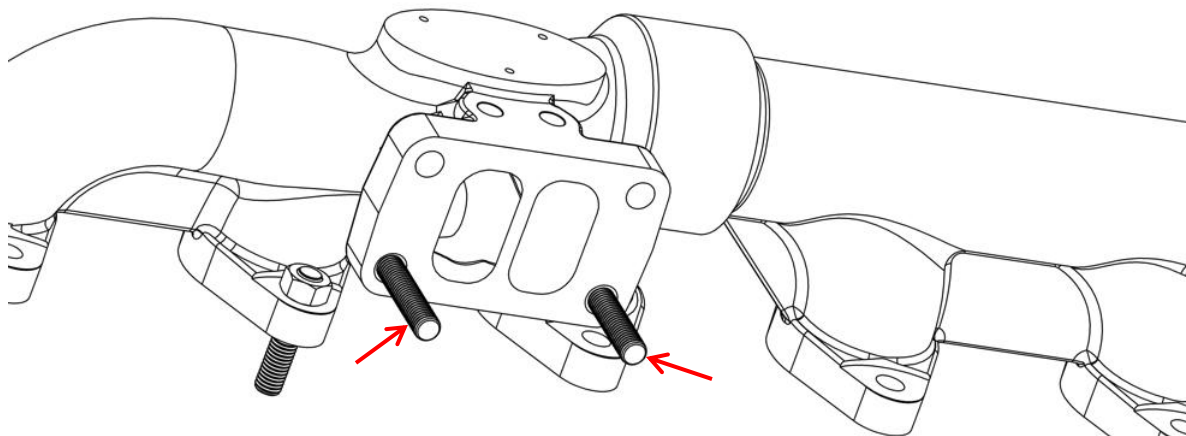
To install your new Diesel Power Source RV manifold to the engine head you will need. The provided **E** bolts, **C** stud, **D** nut and **A** gaskets.

- Use the **A** gaskets to seal the manifold ports against the engine head. (Note: Ensure raised portion of the gasket is directed towards the manifold face.)
- Use the provided **E** bolts, **C** stud, and **D** nut to fasten the manifold to the head. Tighten the bolts to 35 ft-lbs. (Note: Ensure that the **C** stud gets located in the correct bolt hole as highlighted in the picture.)

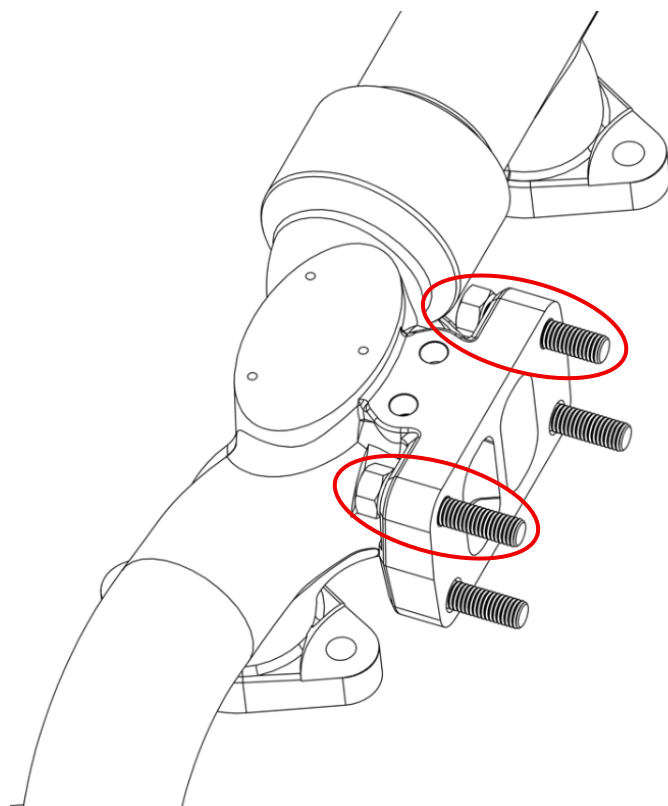


Turbo to Manifold Installation:

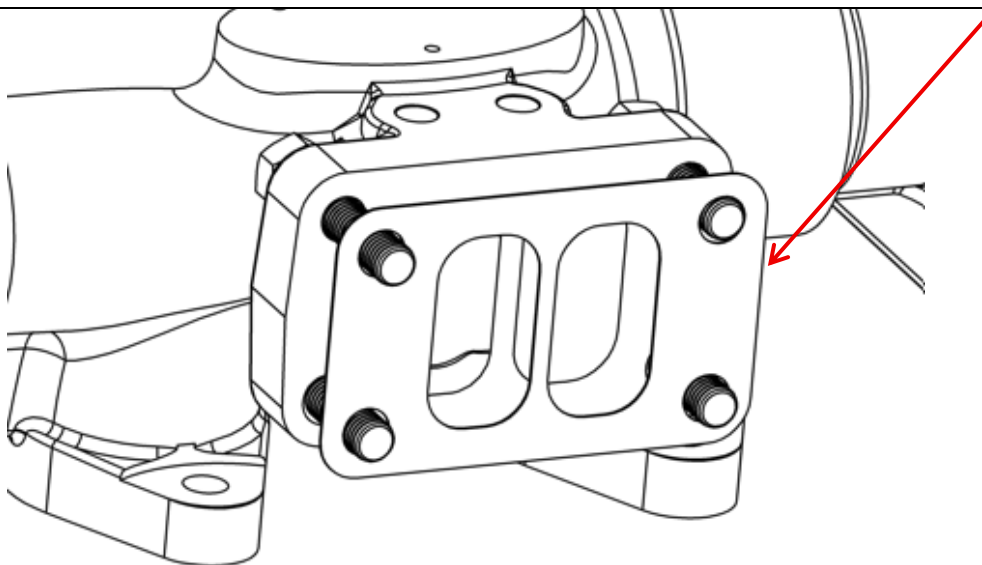
Step 1: Thread two **C** studs into the two threaded manifold holes.



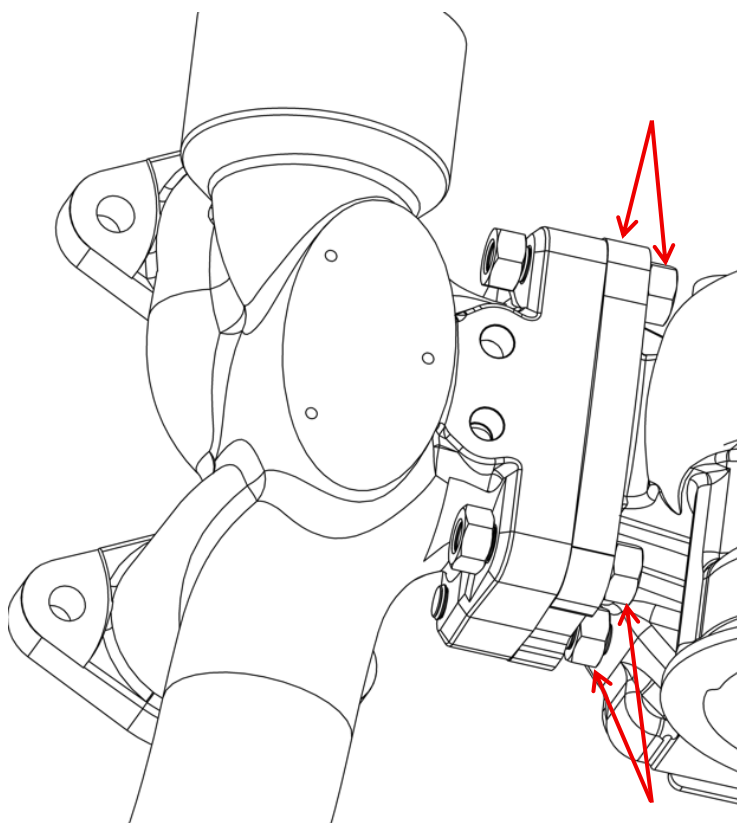
Step 2: Push the last two **C** studs through the non-threaded manifold holes. On the back side of the T3 manifold flange thread two **D** nuts onto the **C** studs.



Step 3: Install the turbo charger onto the manifold ensuring that gasket **B** is placed between the manifold and turbo flange. Hold the turbo in place and proceed to step 4.



Step 4: Thread the last four **D** nuts onto the **C** studs that pass through the back side of the T3 turbo flange. Tighten the bolts to 35 ft-lbs.



After installation, drive truck for approximately 100 miles then, while the truck is warm re-torque all the manifold and turbo bolts, as the bolts sometimes loosen up after being heated and cooled a few times.